

# ALEXANDER *lane*

**Joel or Tyler Schacter**  
604.533.3491  
[www.alexanderlane.ca](http://www.alexanderlane.ca)

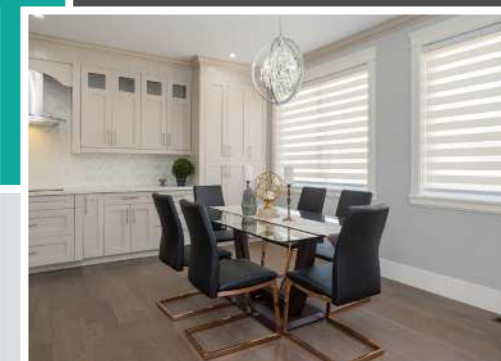
elevation  
REAL ESTATE GROUP



## ALEXANDER *lane*

**10 CUSTOM  
CRAFTSMAN STYLE HOMES**

Exquisite design and modern comfort are uniquely embodied in every brand new Alexander Lane home. Intelligently appointed, gourmet kitchens feature broad walk-in pantries, stainless steel appliances and quartz counter tops beneath luxurious 9' ceilings on main and upper. Posh outdoor fireplace allow for year round entertaining while media rooms are ideal for nights in. Each lofty second floor bedroom is pampered by custom closets and individual or shared, full en-suites - offering privacy for all family members. Lower level presents equally dazzling 2BR legal suites. Quality craftsmanship and superior finishes inside and out complete these stunning contemporary family homes. There's still time to choose your colours & finishings.



elevation  
REAL ESTATE GROUP  
RE/MAX Treeland Realty  
Formerly The Schacter Team



RENO  
QUALITY HOMES

elevation  
REAL ESTATE GROUP

**CONTACT US TODAY**  
**Joel or Tyler Schacter**  
604.533.3491  
[www.alexanderlane.ca](http://www.alexanderlane.ca)





