

29798 GIBSON AVENUE

DONAVON ASH
PERSONAL REAL ESTATE CORPORATION

elevation 
RE/MAX TREELAND REALTY

778-751-4447

elevationrealestate.ca

Not intended to solicit properties currently listed for sale or individuals currently under contract with a Brokerage

29798 GIBSON AVENUE

Living Area: 5,000 SQFT | Lot Area: 11.605 Acres
Bedroom: 6 | Bathroom: 6

Cutting-edge design meets luxury and natural beauty in the heart of Bradner. This award-winning home offers unparalleled privacy and ample space for all activities, while remaining just minutes from the freeway and local amenities.

Featuring state-of-the-art technology and premium materials, including a Savant Smart whole-home automation and entertainment system, this residence boasts impressive architecture with soaring ceilings and expansive windows that open onto a spacious sundeck, showcasing panoramic views of the Fraser River and Mount Baker.

Each of the four bedrooms is generously sized and flooded with natural light, complete with its own ensuite. Two flex rooms offer additional bedrooms or an office/den. With ample parking, including space for an RV, this property is sure to impress.

Host gatherings in style and enjoy the ultimate in comfort and tranquility in your hilltop sanctuary surrounded by nature. Homes and views like this are rare and highly sought after in the Fraser Valley. Don't miss your opportunity.

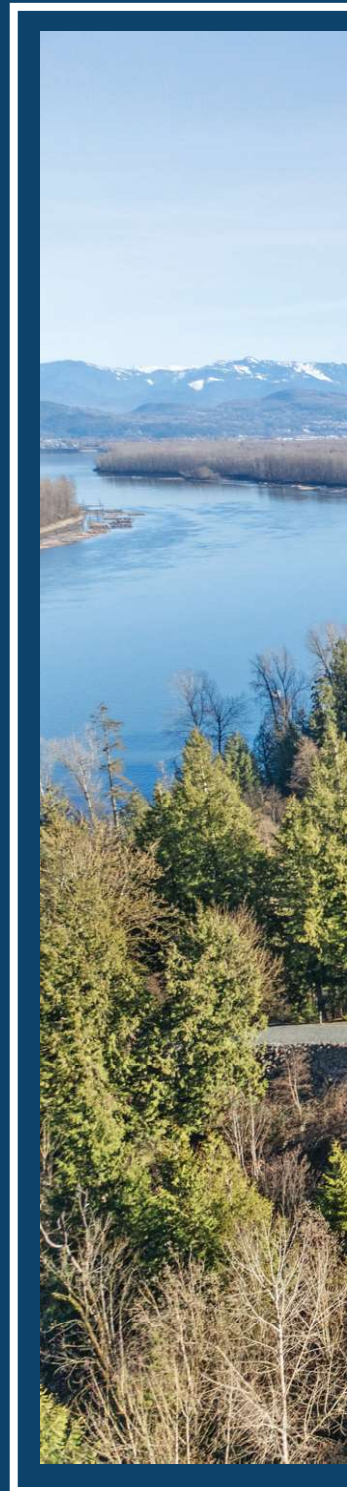
FEATURES



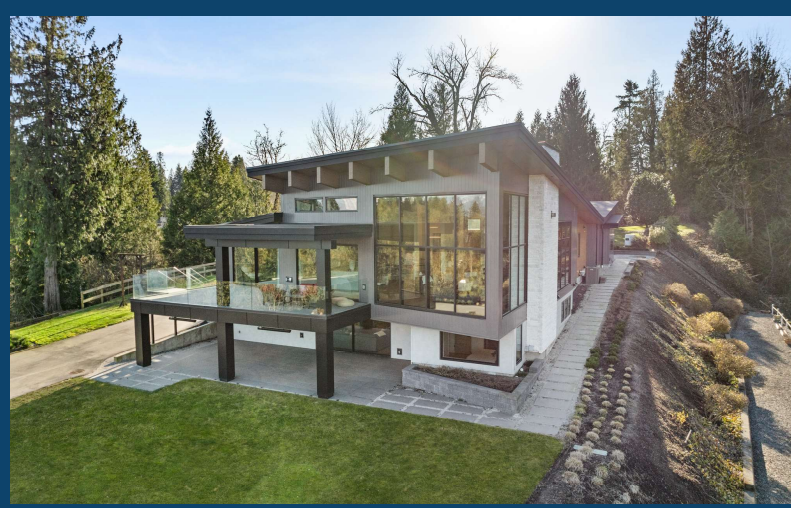
10 parking spaces (3 Car Garage)



Savant Smart whole-home automation and entertainment system

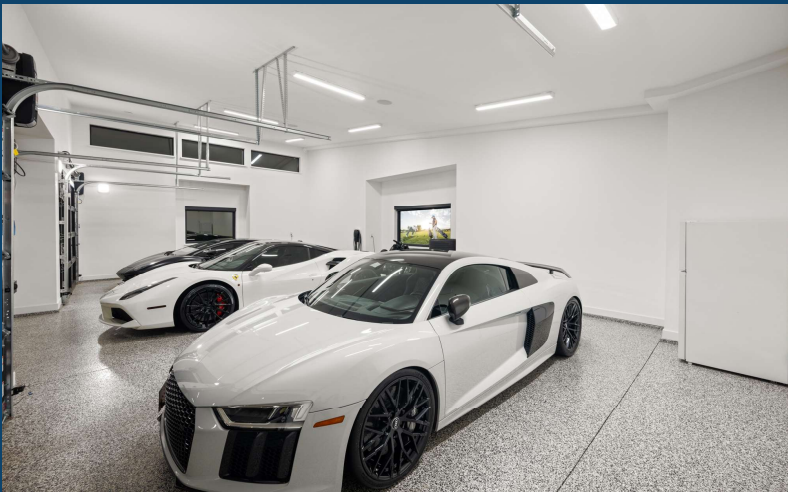










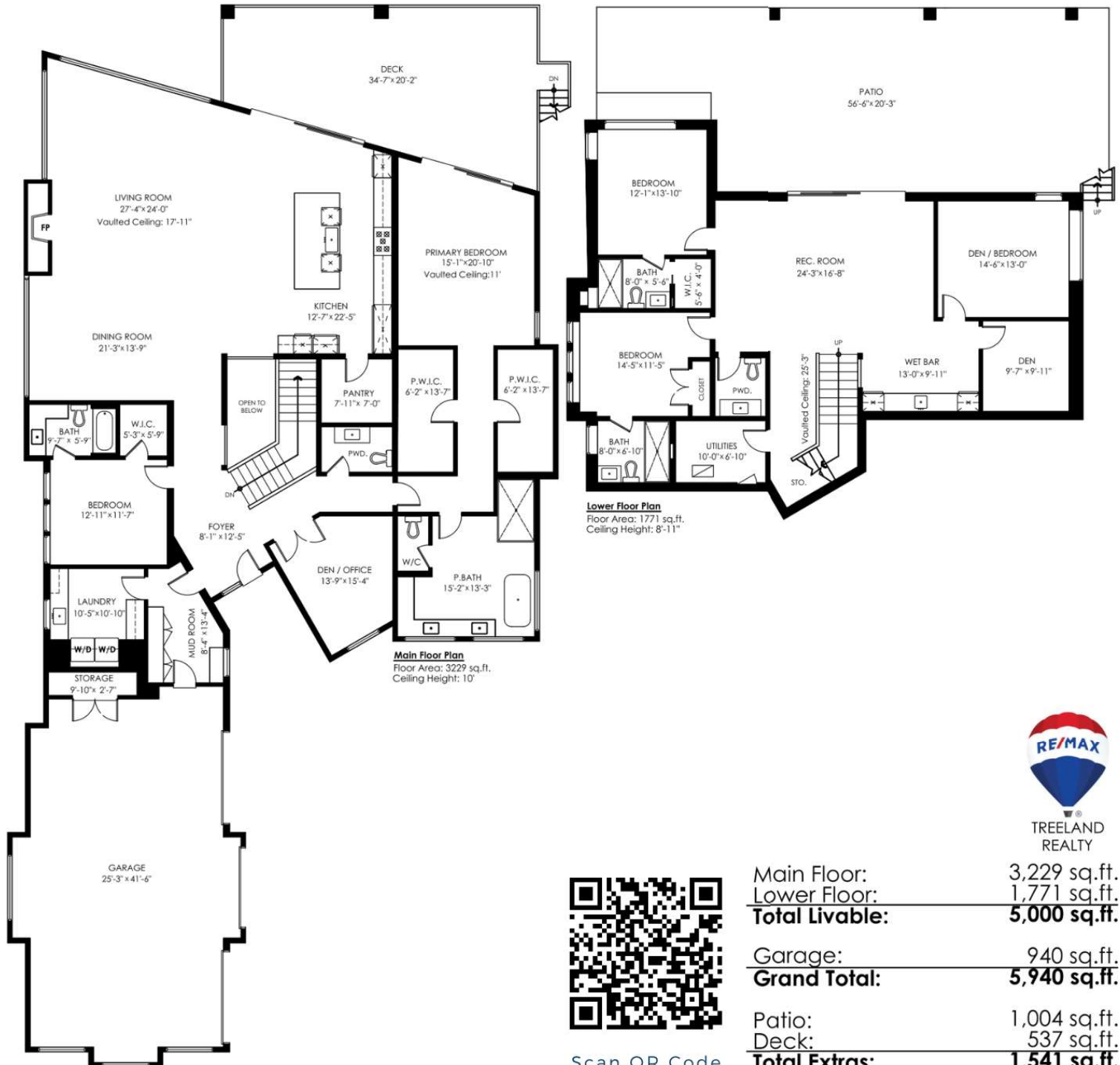


604-704-8551

info@elevationrealestate.ca

www.elevationrealestate.ca

**29798 Gibson Ave
Abbotsford**



SCALE
0 5



Scan QR Code
to view Virtual
Walkthrough



Main Floor:	3,229 sq.ft.
Lower Floor:	1,771 sq.ft.
Total Livable:	5,000 sq.ft.
Garage:	940 sq.ft.
Grand Total:	5,940 sq.ft.
Patio:	1,004 sq.ft.
Deck:	537 sq.ft.
Total Extras:	1,541 sq.ft.
Open To Below:	57 sq.ft.

MEASURED ON: (2024-03-17)

info@pixlworks.com www.pixlworks.com 604.329.5788



E&O Insured. Total square foot calculated to gross unit area. SQFT based on interior measurements to exterior walls, not taken from original blueprints, may include unfinished area. This is for marketing purposes only and is not intended for architectural/construction use. All details, sizes & placements should be considered approximate within +/- 2% tolerance.