

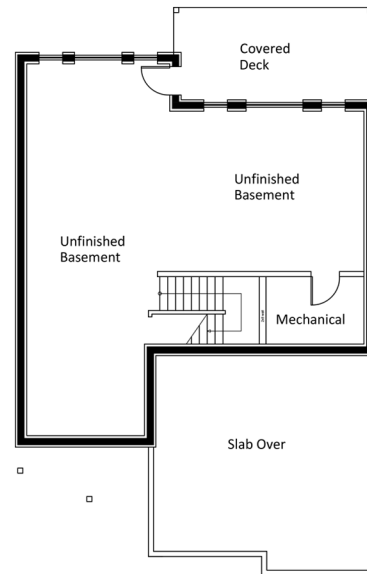


Highfield

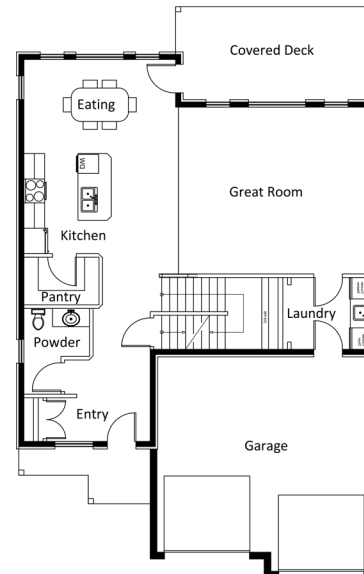
3,527 sq. ft.

2 Storey Home
4 Bedrooms
3 Full Bathrooms
Laundry on Main
Walk in Pantry
Covered Deck
Optional Finish Bsmt
Optional Bunker Area

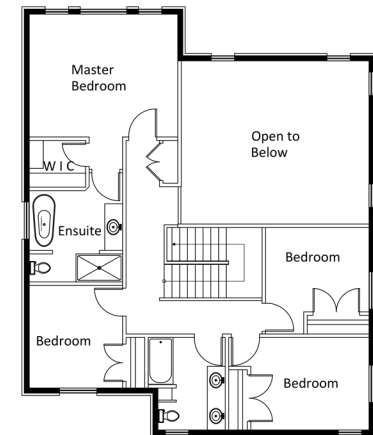
In a continuing effort to improve our homes, Sonbuilt Custom Homes Ltd. reserves the right to make any modifications and/or substitutions, without notice, should they be necessary. Final dimensions, square footage, dimensions, materials and floorplans may vary. E. & O.E.



Basement: 1,217 sq. ft.



Main Floor: 1,217 sq. ft.



Upper Floor: 1,093 sq. ft.



Sonbuilt Custom Homes Ltd.
2361 Merlot Blvd. Abbotsford, BC V4X 0A6 Ph. (604) 626-4688
www.sonbuilt-homes.com



Snowbird

2,417 sq. ft.

Rancher with Basement

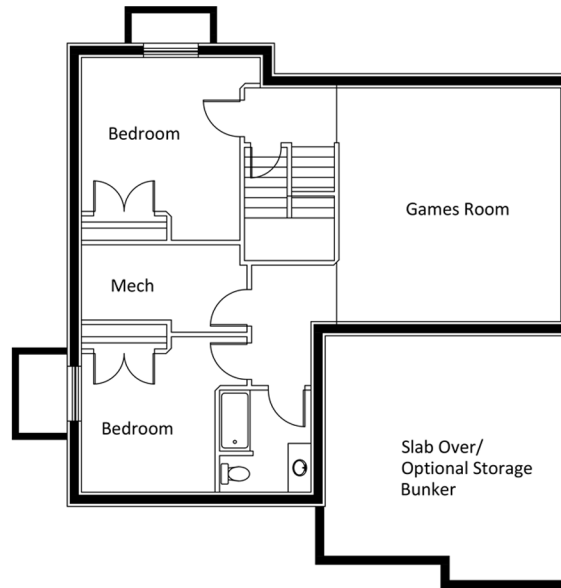
3 Bedrooms

3 Bathrooms

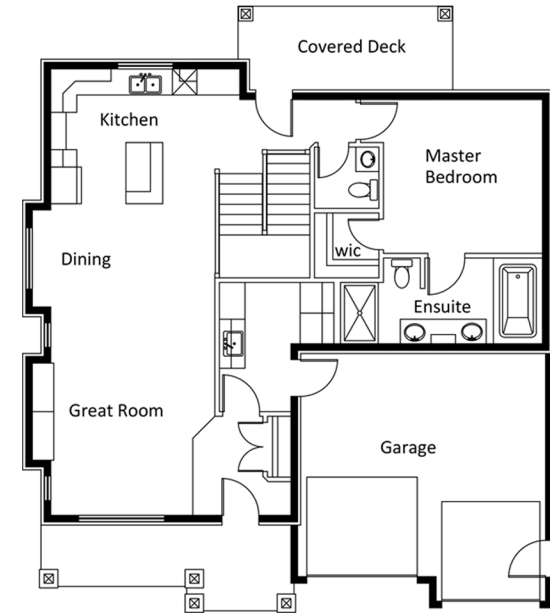
Walk in Pantry

Plenty of Storage

Covered Deck



Basement: 1,195 sq. ft.



Main Floor: 1,222 sq. ft.

In a continuing effort to improve our homes, Sonbuilt Custom Homes Ltd. reserves the right to make any modifications and/or substitutions, without notice, should they be necessary. Final dimensions, square footage, dimensions, materials and floorplans may vary. E. & O.E.

Sonbuilt Custom Homes Ltd.
2361 Merlot Blvd. Abbotsford, BC V4X 0A6 Ph. (604) 626-4688
www.sonbuilt.com

