

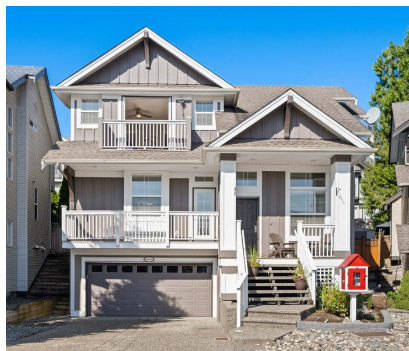
6065 165A STREET

4 BEDROOM | 4 BATHROOM

LOT SIZE: 3,455 SQFT | LIVING AREA: 2,529 SQFT



Come check out this centrally located 3 bedroom 2 bathroom home + office space and large family room below with a closet and exterior sliding glass door! You will also enjoy the private backyard with fruit trees - enjoy the sun or shade! The driveway is large enough for RV parking too! Close to Matsqui Rec Centre, Abb. Exhibition Park, walking trails and all levels of schools! Look at the pictures and virtual tour then call to book your viewing today!



604-319-7735
anna@elevationrealestate.ca

elevation RE/MAX
RE/MAX TREELAND REALTY

ANNA POPPLETON

Not intended to solicit properties currently listed for sale or individuals currently under contract with a Brokerage

WALK SCORE

Walk Score

27

Car-Dependent

Most errands require a car

Transit Score

40

Some Transit

A few nearby public transportation options

Bike Score

53

Bikeable

Some bike infrastructure

SCHOOL CATCHMENT

A.J. McLellan (K- Grade 7)

16545 61 Avenue
Surrey, BC V3S 5V4
(604) 574-7296

Lord Tweedsmuir (Grade 8-12)

6151 180 Street
Surrey, BC V3S 4L5
(604) 574-7407

COMMUTE to downtown Surrey



20 min



52 min



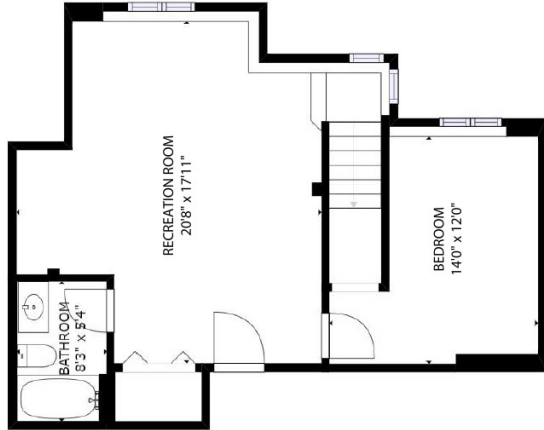
60+ min



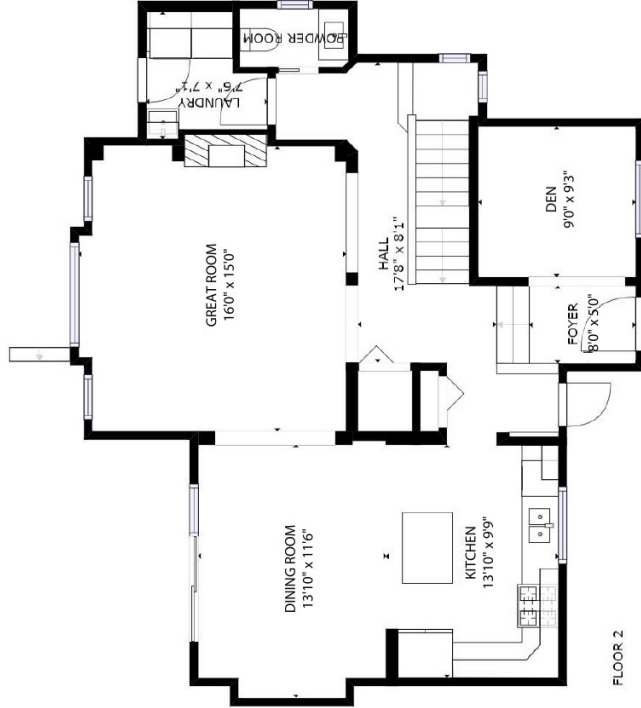




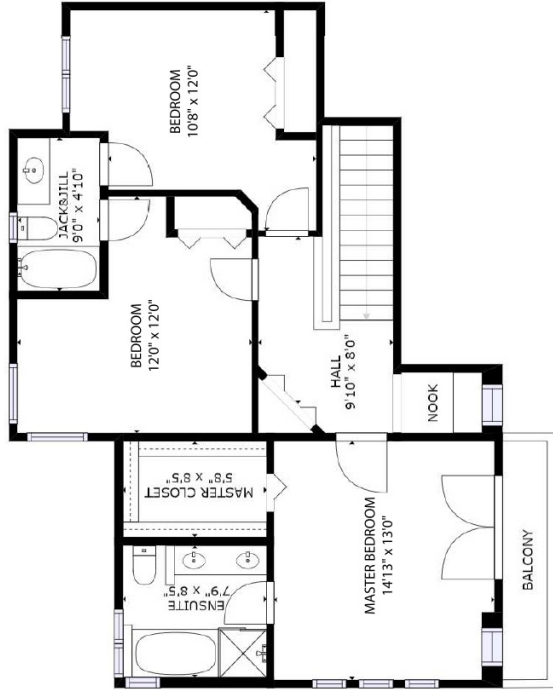
OUTDOOR COVERED PATIO



FLOOR 1



FLOOR 2



FLOOR 3

GROSS INTERNAL AREA
FLOOR 1: 657 sq ft | FLOOR 2: 1,052 sq ft | FLOOR 3: 820 sq ft
TOTAL: 2,529 sq ft

SIZES AND DIMENSIONS ARE APPROXIMATE, ACTUAL MAY VARY.